

LABO 126 PRO-ACTIVE

according to DIN 13277

Equipment

- 2 shelves
- Forced-air cooling
- Key switch
- Automatic defrosting
- Condensate evaporation
- Digital temperature display
- Visual and audible alarm signal
- Standalone or undercounter installation

**MADE IN
GERMANY**



PRO-ACTIVE-Features

- Faster response time in the event of impending faults thanks to proactive alarms
- Data recording can be read out via USB interface using a USB stick and software
- Minimisation of temperature deviations in the interior
- Maximum storage safety thanks to harmonised components



- **PRO-ACTIVE- Control:** Permanent, proactive monitoring of the performance data and alerts in the case of deviations. World's most accurate temperature control in refrigerated areas thanks to two standard PT-1000 sensors.
- **External housing** made from galvanised sheet steel (rust-proof), with white, anti-scratch powder coating. Length of the plug cable: approx. 2.8 m.
- **Adjustable feet** to compensate uneven floors.
- **Interior made from** impact-resistant, white plastic with moulded-in shelves.
- **Interior** can be customised (surcharge may apply). See optional equipment.
- **Extra-thick energy saving insulation**, made from high-quality, compression-moulded and environmentally friendly material.
- **Lockable door** with easy-to-replace plastic magnetic seal frame.
- **Door hinge** on the right-hand side (by default, see illustration), or the left-hand side, can be retrofitted.
- **Automatic defrosting** with time limit and temperature monitoring.
- **Condensate evaporates** in the refrigerating machine interior.
- **Power failure alarm** (visual and audible alarm), the monitoring unit remains in operation for approx. 30 hours on battery power.
- **Warning functions** with visual and audible alarm signal in the case of temperature deviations.
- **Data documentation** can be read via USB interface with KIRSCH Datanet software.
- **Statically ventilated refrigerating machine**, hermetically sealed, energy saving, low-noise, easy to service.

Specification

Capacity	120 litres
Temperature setting	approx. +2 °C to +15 °C
Voltage	220 – 240 V, 50 Hz
Power consumption	110 watts
Normal consumption	0.88 kWh/24 h
Admissible ambient temperature	from +10 °C to +38 °C
Heat emission (max.)	153 watts
Exterior dimensions (including door handle and distance from wall)	w x d x h = 54 x 53.5 x 88.8 cm
Usable dimensions	w x d x h = 43 x 33 x 59 cm *
Exterior dimensions with door open at 90°	w x d = 54 x 106 cm
Shelf size	w x d = 43 x 33 cm
Max. shelf load	25 kg
Weight (net/gross)	49 kg/58 kg
Temperature deviation	+/-0.65 °C
Noise emission	38.5 dB(A)

*Nutztiefe unten 15 cm geringer

Optional equipment

KIRSCH refrigerators and freezers offer numerous equipment options that can be retrofitted.



Glass door

See clearly: avoid opening the door unnecessarily to inspect the contents.



Condensation tray

for manual disposal of condensation water.



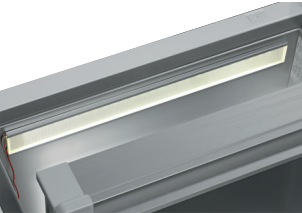
Plastic-drawer on roller runners

Up to eight drawers are possible in total.



Additional length and cross dividers

for the optimum organisation of your refrigerated goods.



Interior lighting ceiling

Optional, optimised and energy-efficient illumination of the interior via LED light strip.



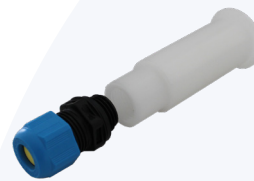
Additional Shelves

Wire shelves, robust with load capacity up to 40 and 50 kg.



Decorative frame

Made of stainless steel, allows to cover door with a decorative panel (thickness max. 2 mm).



Access Port

Simple insertion of an external temperature sensor with integrated cable feed-through.



Door coupling

Connects the furniture door to the device.



Castors

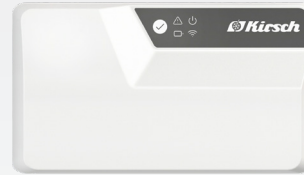
Can be equipped with steering and fixed castors.

Accessories for temperature documentation



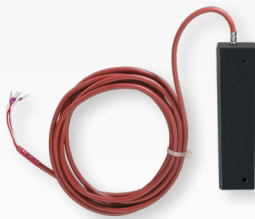
PC-KIT-NET

Automatic temperature documentation and monitoring via your network (LAN connection).



KIRSCH EVOLUTION CLOUD-Module

Maximum storage safety through optimal connectivity and real-time monitoring.



External PT100/PT1000 with cold block

Additional temperature sensor for connection to existing/external monitoring system.



Circular blade temperature recorder

Depending on the model, it is either installed in the machine compartment panel of the unit or integrated into an additional housing attachment.

* For more information about our cloud, please contact us.



Philipp Kirsch GmbH
Im Lossenfeld 14
77731 Willstätt
Germany

Phone: +49 (0) 781 9227-0
Telefax: +49 (0) 781 9227-200
info@kirsch-medical.com

www.kirsch-medical.com



Photograph this QR code
and learn
about our entire
product range.